

Article

Hospital Incidence, Sex Disparities, and Perioperative Mortality in Open Surgically Treated Patients with Aneurysms of the Ascending Aorta and Aortic Arch in Switzerland

Anna-Leonie Menges , Alexander Zimmermann * , Kerstin Stoklasa , Daniela Reitnauer, Lorenz Meuli  [†] and Benedikt Reutersberg [†] 

Department of Vascular Surgery, University Hospital Zurich, CH-8091 Zurich, Switzerland; anna-leonie.menges@usz.ch (A.-L.M.); kerstin.stoklasa@usz.ch (K.S.); daniela.reitnauer@usz.ch (D.R.); lorenz.meuli@usz.ch (L.M.); benedikt.reutersberg@usz.ch (B.R.)

* Correspondence: alexander.zimmermann@usz.ch; Tel.: +41-44-255-20-39

[†] These authors contributed equally to this work.

Abstract: Objective. To analyze the epidemiological shifts in the incidence of ascending and arch aortic aneurysms (AA) treated with open surgery in the context of evolving endovascular options on a national basis. Methods. Between 1 January 2009 and 31 December 2018, 4388 cases were admitted to the hospital with either ruptured (r)AA or non-ruptured (nr)AA as the primary or secondary diagnosis. Patients were classified as having AA based on inclusion and exclusion criteria. Results. The age-standardized hospital incidence rates for treatment of nrAA were 7.8 (95% confidence interval (CI): 6.9 to 8.7) in 100,000 men and 2.9 (2.4 to 3.4) in 100,000 women and were stable over time. The overall raw in-hospital mortality rate was 2.0% and was significantly lower in males compared to women (1.6% vs. 2.8%, $p = 0.015$). Higher van Walraven scores (OR: 1.08 per point; 95%CI: 1.06 to 1.11; $p = 0.001$) and higher age (OR 1.05 per year; 95%CI: 1.02 to 1.07, $p = 0.045$) were significantly associated with hospital mortality. Conclusions. Endovascular surgery seems to have no influence on hospital incidence in patients treated with conventional surgery for AA in Switzerland. There was a significant reduction in in-hospital mortality in both men and women, with age and the von Walraven score being independent factors for worse outcomes.

Keywords: thoracic aneurysm; ascending aortic aneurysm; aortic arch aneurysm; acute aortic syndrome; epidemiology; diagnosis-related groups



Citation: Menges, A.-L.; Zimmermann, A.; Stoklasa, K.; Reitnauer, D.; Meuli, L.; Reutersberg, B. Hospital Incidence, Sex Disparities, and Perioperative Mortality in Open Surgically Treated Patients with Aneurysms of the Ascending Aorta and Aortic Arch in Switzerland. *Healthcare* **2024**, *12*, 388. <https://doi.org/10.3390/healthcare12030388>

Academic Editors: Raffaele Giordano and Gen-Min Lin

Received: 2 December 2023

Revised: 17 January 2024

Accepted: 30 January 2024

Published: 2 February 2024



Copyright: © 2024 by the authors. Licensee MDPI, Basel, Switzerland. This article is an open access article distributed under the terms and conditions of the Creative Commons Attribution (CC BY) license (<https://creativecommons.org/licenses/by/4.0/>).

1. Introduction

Ascending and arch aortic aneurysms (AA) are dilations of the aortic wall that can be catastrophic if not detected and treated in time. Often silent until they reach a significant size or cause complications, these aneurysms can lead to aortic dissection or rupture, both of which are life-threatening [1,2]. The etiology of these aneurysms can be multifactorial, including genetic predisposition, atherosclerosis, hypertension, connective tissue disorders, and other risk factors.

Hospital incidence of AA is a critical measure for healthcare systems, as it provides insight into the prevalence of the disease and the effectiveness of screening programs [3,4]. In recent decades, the broad availability of advanced imaging modalities such as computed tomography (CT) and magnetic resonance imaging (MRI) has revolutionized the early detection and monitoring of these aneurysms, potentially reducing the number of emergency cases [3].

Although population-based studies have been performed for the entire thoracic aorta, there is no reliable data for AA [3,5–7]. Research based on the Rochester Epidemiology Project showed an incidence rate of 10.4 per 100,000 person-years for degenerative thoracic aortic aneurysms (TAA) in Olmsted County residents from 1980 to 1994 [2]. However,

these data are from patients older than 20 years, and recent epidemiological evidence on these aneurysms is scarce. In addition, no distinction has been made between the ascending aorta/aortic arch and the descending aorta. This is partly because there are only two codes in the 10th revision of the International Classification of Diseases (ICD-10) for documenting TAA. ICD-10 codes I71.1 and I71.2 are used to describe ruptured and non-ruptured aneurysms of the thoracic aorta (rTAA and nrTAA), respectively [8]. Hence, ICD coding does not allow distinction between aneurysms involving only the ascending aorta or aortic arch and those involving only the descending thoracic aorta. This shortcoming hinders data interpretation, as these entities are fundamentally different in their clinical management.

AA are mainly treated with open surgery. Of the various techniques, the best known are the Bentall and the David procedure. In the Bentall procedure, the aortic valve, the aortic root, and the ascending aorta are replaced with a composite graft [9]. In the David procedure, the enlarged aortic root is replaced with a Dacron graft, leaving the natural aortic valve intact [10,11]. In addition to open surgical repair, endovascular treatments are also available in which a stent graft is used to seal the aneurysm and reinforce the aortic wall, also known as thoracic endovascular aortic repair (TEVAR) [7,12]. Endovascular procedures are minimally invasive and are based on adequate sealing in healthy aortic segments. Insufficient sealing can lead to the incomplete exclusion of the aneurysm. Sealing is particularly challenging in the aortic sinus, where the coronary artery originates, and in the aortic arch, where the supra-aortic branches originate. The choice of treatment method depends on several factors, including the patient's condition, the anatomy of the aneurysm, and the treating physician's preference. However, AA treatment has evolved over the last decade. With the advancement of endovascular techniques, less invasive approaches, such as endovascular arch repair or endovascular Bentall procedures, have become more common [13–15]. The choice between surgical and endovascular intervention usually depends on the anatomical location of the aneurysm, its size, the general health of the patient, and the expertise of the treatment team.

Given these uncertainties, there is a significant gap in our understanding of the epidemiology of ascending aortic arch aneurysms and their perioperative mortality in open surgery. Additionally, this study aimed to analyze epidemiological shifts in the incidence of degenerative AA treated with open surgery in the context of ever-evolving endovascular options.

2. Materials and Methods

We performed secondary data analysis using hospital discharge records from the Swiss Federal Statistical Office (SFSO). A detailed methodology for the use of these data has been previously described in a publication on abdominal aortic aneurysm (AAA) [4]. Essentially, every Swiss hospital that treats inpatients is required to report all patient admissions to SFSO annually. This dataset includes various parameters, such as age, sex, up to 50 diagnosis codes, a maximum of 100 procedure codes, details of in-hospital mortality, previous location before admission, type of admission, insurance category, length of time before treatment, total length of hospital stay, length of stay in intensive care, and length of time on mechanical ventilation. Diagnoses were coded according to the International Classification of Diseases 10th revision, while procedures were coded according to the Swiss Classification of Procedures (CHOP). The updated CHOP code list can be found at <https://bit.ly/3zYViv6>, accessed on 17 January 2024 [16].

It is important to note that, due to privacy standards, patient identifiers were not accessible and institution numbers were coded. This ensures that individual patients undergoing reintervention at different hospital visits remain unidentified.

A review by the local ethics committee (BASEC No Req-2021-01010) confirmed that ethical approval was not required for the analysis of anonymous data. We reported our results according to the STROBE guidelines [17].

2.1. Inclusion and Exclusion Criteria

The ICD-10 classification distinguishes thoracic, thoracoabdominal, and abdominal aortic aneurysms. In addition, for each anatomical region, the condition was classified as ruptured or non-ruptured. This means that specificities such as ascending aortic aneurysms, aortic arch aneurysms, and descending aortic aneurysms or their combinations are not explicitly captured in the ICD-10 codes. Therefore, we only included cases with both a relevant ICD-10 diagnosis code and a CHOP procedure code indicating aortic replacement, along with another CHOP code for extracorporeal circulation (ECC). The ICD-10 codes used were I71.1 and I71.2, which cover both rTAA and nrTAA, respectively [8]. The specific CHOP codes used for aortic surgery and ECC are listed in Table S1 [16].

2.2. Statistical Analysis

We stratified baseline characteristics and outcomes according to sex. For descriptive statistics, approximately normally distributed continuous variables were reported as the mean and standard deviation (SD). For variables with a skewed distribution, we calculated the median and quartiles (Q1 and Q3). We used the Student's t-test for normally distributed continuous variables and the Mann–Whitney U test for those with skewed distributions. Categorical variables were described as frequencies and percentages, and comparisons were made using Pearson's Chi2 test.

We calculated age-standardized cumulative incidences using the 2013 European Standard Population and the Swiss population based on SFSO data for the years 2010 to 2018 [18–20]. As the age distribution of the Swiss population in 2009 was not available, we used the age distribution for 2010. The logit-Wald 95% confidence intervals (95%CI) for the direct age-standardized estimates were adjusted as recommended by Altman et al., but on the logit scale [21]. We derived both crude and age-standardized sex-specific hospital mortality rates, adjusting for year of treatment and the sum score of weighted Elixhauser ICD-10 diagnosis groups according to van Walraven's method [22].

To examine the association between sex and hospital mortality, we constructed a multivariate logistic regression model for the entire cohort. This model was adjusted for potential confounders by including variables such as sex (factor), age (continuous), type of admission (factor), Van Walraven comorbidity score (continuous), insurance class (factor), hospital level (factor), and year of treatment (factor). Regression coefficients are presented as odds ratios (OR) with corresponding 95% CIs.

All analyses were performed using R version 4.2.3 on macOS 12.5.1 [23]. All *p*-values were two-sided, and the significance level was set at 5%.

3. Results

Between 1 January 2009, and 31 December 2018, 24,220 patients were admitted to the hospital with either rTAA or nrTAA as the primary or secondary diagnosis. We excluded cases in which nrTAA was the primary or secondary diagnosis but without surgical intervention during hospitalization (*n* = 18,782). Patients with a concurrent diagnosis of thoracic aortic dissection were also excluded (*n* = 534). Additionally, cases of rTAA that were transferred (*n* = 159), those with a secondary diagnosis without treatment (*n* = 128), and those who survived for more than three days without surgery (*n* = 209) were excluded. We also excluded cases with duplicate entries (*n* = 20) from the analysis (Figure 1). This study included 4388 cases, of which 94.1% were treated for nrTAA and 5.9% were treated for rTAA and were rated as AA based on the inclusion and exclusion criteria (see Figure 1).

Table 1 summarizes the baseline characteristics of the study cohort for non-ruptured aneurysms stratified by sex. 73.6% of the patients were male, and the median age was 65 years (Q1, Q3:56–72). Female patients were significantly older than male patients, with a median age of 69 (Q1, Q3:60–75) versus 64 (Q1, Q3:55–71) years (*p* < 0.001). Female patients were significantly more likely to have a diagnosis of chronic obstructive pulmonary disease (COPD) (*p* = 0.018), while men were significantly more frequently affected by coronary heart disease (CHD) (*p* < 0.001). Other comorbidities were similar between men and women.

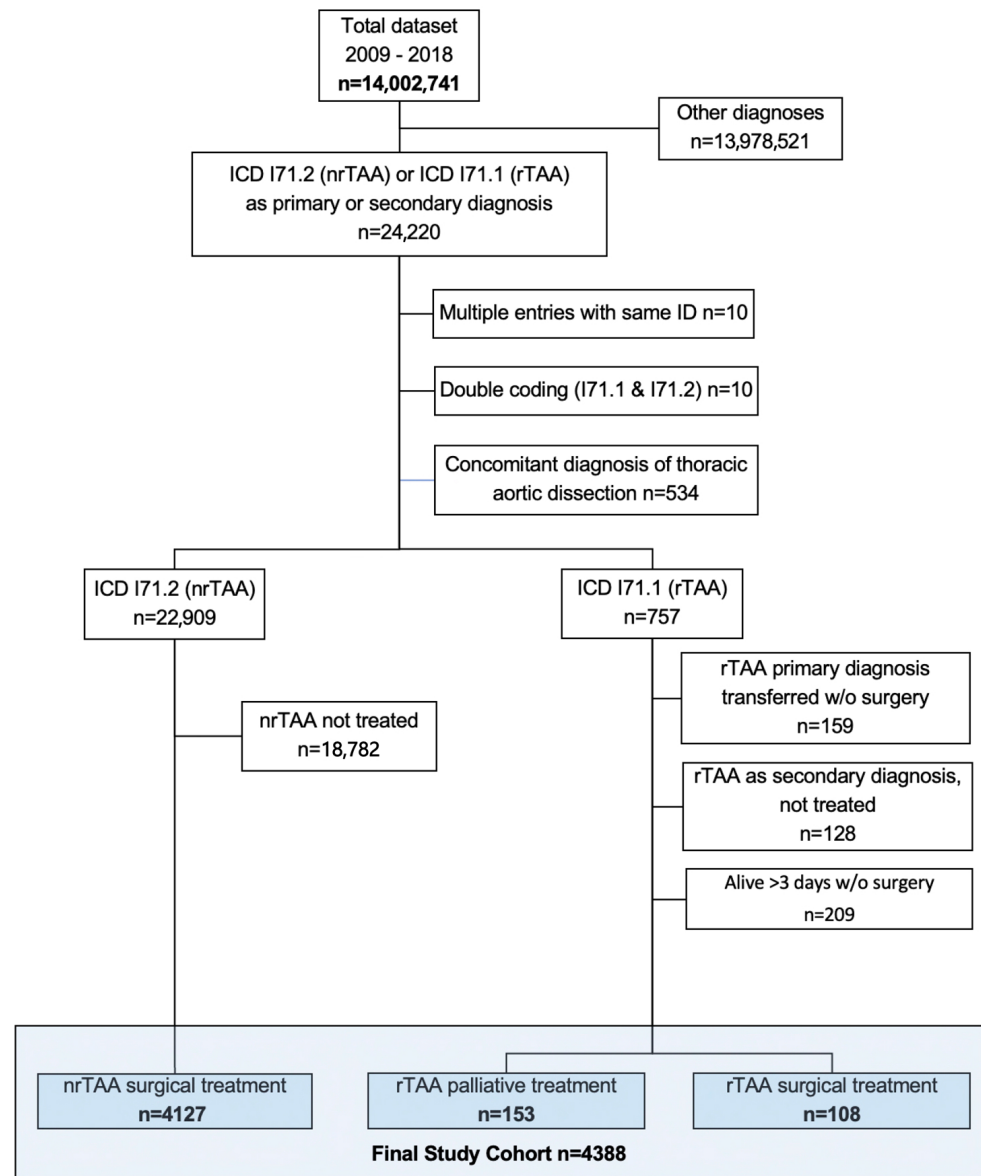


Figure 1. Patient flow. The dataset encompassed all hospital admissions within the Swiss population from the years 2009 to 2018. ICD: International Classification of Diseases (version 10); rTAA: ruptured thoracic aortic aneurysm; nrTAA: non-ruptured thoracic aortic aneurysm.

Table 1. Baseline characteristics of non-ruptured ascending and arch aortic aneurysms (nrAA).

	Male (N = 3036)	Female (N = 1091)	Total (N = 4127)	p-Value
Age, years	64 (55, 71)	69 (60, 75)	65 (56, 72)	<0.001
van Walraven score	7 (3, 14)	8 (2, 14)	7 (3, 14)	0.411
Coronary artery disease	1126 (37.1%)	306 (28.0%)	1432 (34.7%)	<0.001
Chronic heart failure	519 (17.1%)	186 (17.0%)	705 (17.1%)	0.972
Cerebrovascular disease	246 (8.1%)	80 (7.3%)	326 (7.9%)	0.419
Arterial hypertension	1455 (47.9%)	543 (49.8%)	1998 (48.4%)	0.295
COPD	333 (11.0%)	149 (13.7%)	482 (11.7%)	0.018
Diabetes mellitus	240 (7.9%)	67 (6.1%)	307 (7.4%)	0.057
Chronic kidney disease	304 (10.0%)	109 (10.0%)	413 (10.0%)	0.983
Cancer	18 (0.6%)	3 (0.3%)	21 (0.5%)	0.206
Obesity	143 (4.7%)	67 (6.1%)	210 (5.1%)	0.065
Marfan syndrome	49 (1.6%)	15 (1.4%)	64 (1.6%)	0.584
Level of care				0.372
University Hospital	1690 (55.7%)	587 (53.8%)	2277 (55.2%)	

Table 1. *Cont.*

	Male (N = 3036)	Female (N = 1091)	Total (N = 4127)	p-Value
Major Hospital	922 (30.4%)	334 (30.6%)	1256 (30.4%)	0.344
Other	424 (14.0%)	170 (15.6%)	594 (14.4%)	
Location before admission				0.921
Home	2832 (93.3%)	1016 (93.1%)	3848 (93.2%)	
Nursing home	3 (0.1%)	1 (0.1%)	4 (0.1%)	
Other	30 (1.0%)	5 (0.5%)	35 (0.8%)	
Acute care hospital	171 (5.6%)	69 (6.3%)	240 (5.8%)	
Treatment period				0.921
2009–2013	1464 (48.2%)	528 (48.4%)	1992 (48.3%)	
2014–2018	1572 (51.8%)	563 (51.6%)	2135 (51.7%)	

Data were complete. The counts are presented as percentages in parentheses. Continuous variables were presented as medians and quartiles (Q1 and Q3). COPD: chronic obstructive pulmonary disease.

A similar picture emerged for surgically treated ruptured (r)AA. 31.5% of the treated cases were female and were significantly older than men aged 73 years (Q1, Q3:68, 78) vs. 65 years (Q1, Q3:52, 75) ($p = 0.012$). In terms of comorbidities, the only difference was chronic kidney disease, which was significantly more common in men than in women. (Table 2).

Table 2. Baseline characteristics of ruptured ascending and arch aortic aneurysms (surgically treated) (rAA).

	Male (N = 74)	Female (N = 34)	Total (N = 108)	p-Value
Age, years	65 (52, 75)	73 (68, 78)	69 (54, 75)	0.012
van Walraven score	13 (3, 20)	12 (3, 16)	13 (3, 19)	0.540
Coronary artery disease	17 (23.0%)	7 (20.6%)	24 (22.2%)	0.782
Chronic heart failure	8 (10.8%)	6 (17.6%)	14 (13.0%)	0.326
Cerebrovascular disease	14 (18.9%)	6 (17.6%)	20 (18.5%)	0.874
Arterial hypertension	30 (40.5%)	17 (50.0%)	47 (43.5%)	0.357
COPD	7 (9.5%)	4 (11.8%)	11 (10.2%)	0.713
Diabetes mellitus	2 (2.7%)	4 (11.8%)	6 (5.6%)	0.056
Chronic kidney disease	9 (12.2%)	0 (0.0%)	9 (8.3%)	0.034
Cancer	1 (1.4%)	0 (0.0%)	1 (0.9%)	0.496
Obesity	1 (1.4%)	0 (0.0%)	1 (0.9%)	0.496
Marfan syndrome	1 (1.4%)	1 (2.9%)	2 (1.9%)	0.569
Level of care				0.680
University hospital	50 (67.6%)	22 (64.7%)	72 (66.7%)	
Major hospital	19 (25.7%)	8 (23.5%)	27 (25.0%)	
Other	5 (6.8%)	4 (11.8%)	9 (8.3%)	
Location before admission				0.821
Home	42 (56.8%)	19 (55.9%)	61 (56.5%)	
Nursing home	0 (0.0%)	1 (2.9%)	1 (0.9%)	
Acute care hospital	32 (43.2%)	14 (41.2%)	46 (42.6%)	
Treatment period				0.420
2009–2013	33 (44.6%)	18 (52.9%)	51 (47.2%)	
2014–2018	41 (55.4%)	16 (47.1%)	57 (52.8%)	

Data were complete. The counts are presented as percentages in parentheses. Continuous variables were presented as medians and quartiles (Q1 and Q3). COPD: chronic obstructive pulmonary disease.

3.1. Epidemiology

The age-standardized hospital incidence rates for treatment of non-ruptured (nrAA) were 7.8 (95%CI: 6.9 to 8.7) in 100,000 men and 2.9 (95%CI: 2.4 to 3.4) in 100,000 women. The age-standardized hospital incidence rates for rAA (treated and palliative combined) were 0.4 (95%CI: 0.2 to 0.6) in 100,000 men and 0.3 (95%CI: 0.2 to 0.5) in 100,000 women. The incidence rates were stable in the observed decade for both sexes for nrAAs and rAAs (Figure 2a,b).

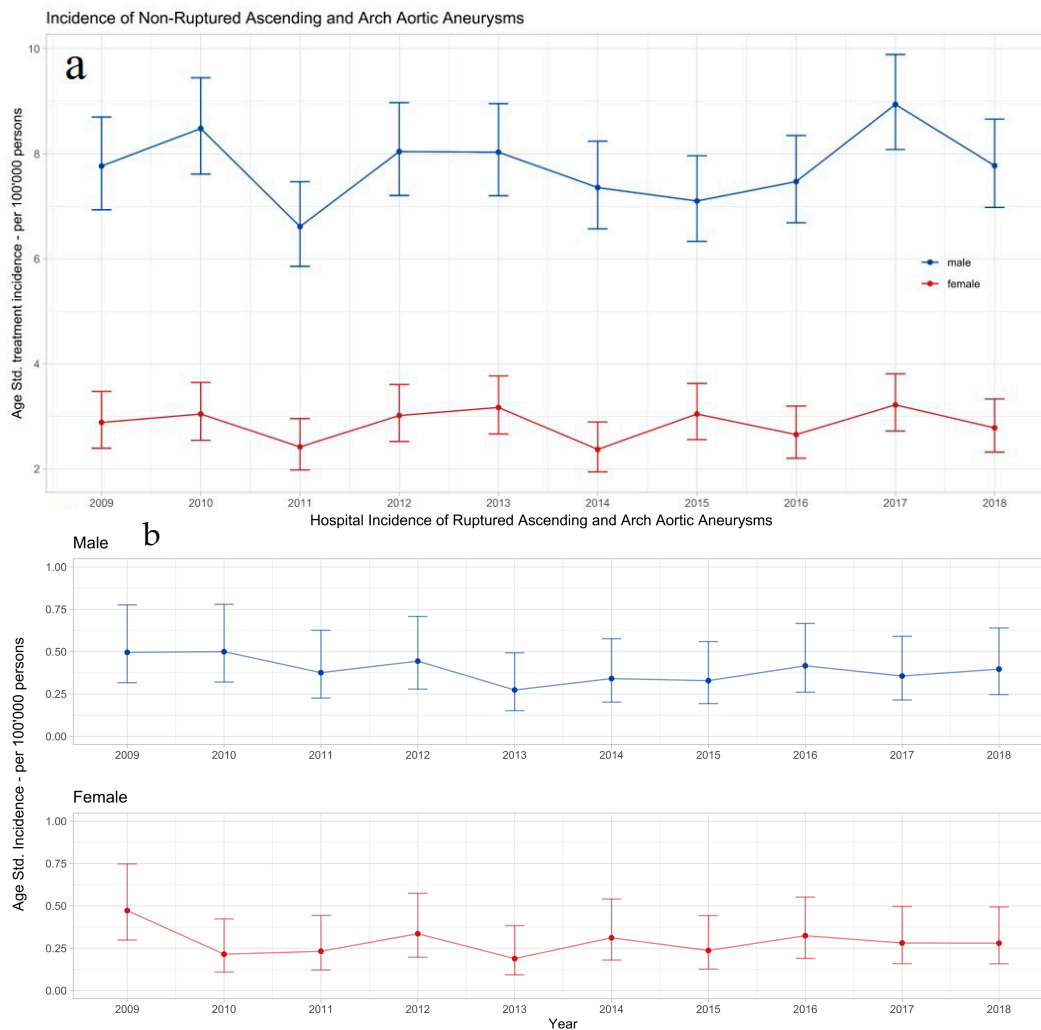


Figure 2. Hospital incidence of non-ruptured ascending and arch aortic aneurysm (a) and ruptured ascending and arch aortic aneurysm (b). The standardized incidence rates are presented with 95% confidence intervals for each year and stratified by sex.

3.2. Treatment Specifications and Outcomes in nrAA

Tables 1 and 3 summarize the treatment specifications of the study cohort stratified by sex. The vast majority of the 4127 cases of nrAA were treated in major hospitals. These included university hospitals (55.2%) and large non-university hospitals (30.4%). In nrAA treatment, men received concomitant aortic valve replacement significantly more often than women (16.3% vs. 12.4%, $p = 0.03$). Females received significantly more red blood cells than males (43.2% vs. 27.3%, $p < 0.001$). Females were treated for a significantly longer duration in the ICU than males (median 29 h versus 26 h, $p = 0.004$). The average length of hospital stay was also significantly longer in women (11 days versus 10 days, $p < 0.001$). Men were discharged immediately after hospitalization in 36.2% of cases, compared with 28.7% of women ($p < 0.001$). Only 5.4% (men: 4.9% and women: 7.0%) of all patients were transferred to another acute care hospital after surgical treatment. The data reflect the time to discharge from the hospital where the surgical treatment was performed and therefore do not reflect the total length of stay to discharge from any subsequent inpatient treatment.

Table 3. Treatment and outcome of non-ruptured ascending and arch aortic aneurysms (nrAA).

	Male (N = 3036)	Female (N = 1091)	Total (N = 4127)	p-Value
Aortic valve management				0.003
No replacement	2540 (83.7%)	956 (87.6%)	3496 (84.7%)	
Valve replaced, allograft	2 (0.1%)	0 (0.0%)	2 (0.0%)	
Valve replaced, mechanical	58 (1.9%)	15 (1.4%)	73 (1.8%)	
Valve replaced, biological	284 (9.4%)	94 (8.6%)	378 (9.2%)	
Composite graft, biological	116 (3.8%)	23 (2.1%)	139 (3.4%)	
Composite graft, mechanical	36 (1.2%)	3 (0.3%)	39 (0.9%)	
Hybrid procedure	19 (0.6%)	11 (1.0%)	30 (0.7%)	0.202
Length of Stay ICU, hours	26 (21, 58)	29 (22, 68)	27 (21, 62)	0.004
Length of stay (swissdrg), days	10 (9, 14)	11 (9, 15)	11 (9, 14)	< 0.001
Packed red blood cells				< 0.001
0	2208 (72.7%)	620 (56.8%)	2828 (68.5%)	
1–5	639 (21.0%)	383 (35.1%)	1022 (24.8%)	
>5	189 (6.2%)	88 (8.1%)	277 (6.7%)	
Fresh frozen plasma				0.052
0	2877 (94.8%)	1034 (94.8%)	3911 (94.8%)	
1–5	107 (3.5%)	48 (4.4%)	155 (3.8%)	
>5	52 (1.7%)	9 (0.8%)	61 (1.5%)	
Platelet concentrate				0.050
0	2940 (96.8%)	1072 (98.3%)	4012 (97.2%)	
1–5	91 (3.0%)	18 (1.6%)	109 (2.6%)	
>5	5 (0.2%)	1 (0.1%)	6 (0.1%)	
Complications				
Myocardial infarction	46 (1.5%)	15 (1.4%)	61 (1.5%)	0.742
Acute stroke	58 (1.9%)	11 (1.0%)	69 (1.7%)	0.046
Acute paraplegia	3 (0.1%)	2 (0.2%)	5 (0.1%)	0.491
Acute renal failure	2 (0.1%)	2 (0.2%)	4 (0.1%)	0.285
CVVHD	71 (2.3%)	25 (2.3%)	96 (2.3%)	0.929
Acute mesenteric ischemia	6 (0.2%)	4 (0.4%)	10 (0.2%)	0.330
Large bowel resection	4 (0.1%)	1 (0.1%)	5 (0.1%)	0.744
Small bowel resection	3 (0.1%)	2 (0.2%)	5 (0.1%)	0.491
Acute limb ischemia	15 (0.5%)	20 (1.8%)	35 (0.8%)	< 0.001
Crural fasciotomy	3 (0.1%)	2 (0.2%)	5 (0.1%)	0.491
Amputation	1 (0.0%)	0 (0.0%)	1 (0.0%)	0.549
Destination after discharge				< 0.001
Home	1098 (36.2%)	313 (28.7%)	1411 (34.2%)	
Nursing home	10 (0.3%)	3 (0.3%)	13 (0.3%)	
Other	18 (0.6%)	5 (0.5%)	23 (0.6%)	
Rehabilitation	1712 (56.4%)	663 (60.8%)	2375 (57.5%)	
Acute care hospital	148 (4.9%)	76 (7.0%)	224 (5.4%)	
Deceased	50 (1.6%)	31 (2.8%)	81 (2.0%)	
Hospital Mortality	50 (1.6%)	31 (2.8%)	81 (2.0%)	0.015

Data were complete. Continuous variables were summarized as medians and quartiles (Q1, Q3). ICU, intensive care unit; CVVHD, continuous venovenous hemodialysis.

The overall raw in-hospital mortality rate for surgically treated nrAAs was 2.0%, which was significantly lower in men than in women (1.6% vs. 2.8%, $p = 0.015$), see Table 3).

The age-adjusted mortality rates for nrAA treatment decreased significantly from 0.9% (95%CI: 0.2 to 4.0%) in 2009 to 0.4% (95%CI: 0.1 to 1.7%) in 2018 in men ($p = 0.046$) and from 1.4% (0.3 to 6.4%) in 2009 to 0.6% (0.1 to 2.8%) in 2018 in women ($p = 0.045$) (Figure 3).

Multivariable logistic regression analysis of hospital mortality for the nrAA cohort showed that sex was not associated with mortality (Figure 4). However, there was a tendency towards higher mortality in females (odds ratio (OR) 1.53; 95% confidence interval CI: 0.95 to 2.43; $p = 0.077$). Higher van Walraven scores (OR: 1.08 per point; 95%CI: 1.06 to 1.11; $p < 0.001$) and higher age (OR 1.05 per year; 95%CI: 1.02 to 1.07; $p < 0.001$) were significantly associated with hospital mortality. Concomitant valve replacement was associated with lower mortality (OR, 0.34; 95%CI: 0.10 to 0.89; $p = 0.049$).

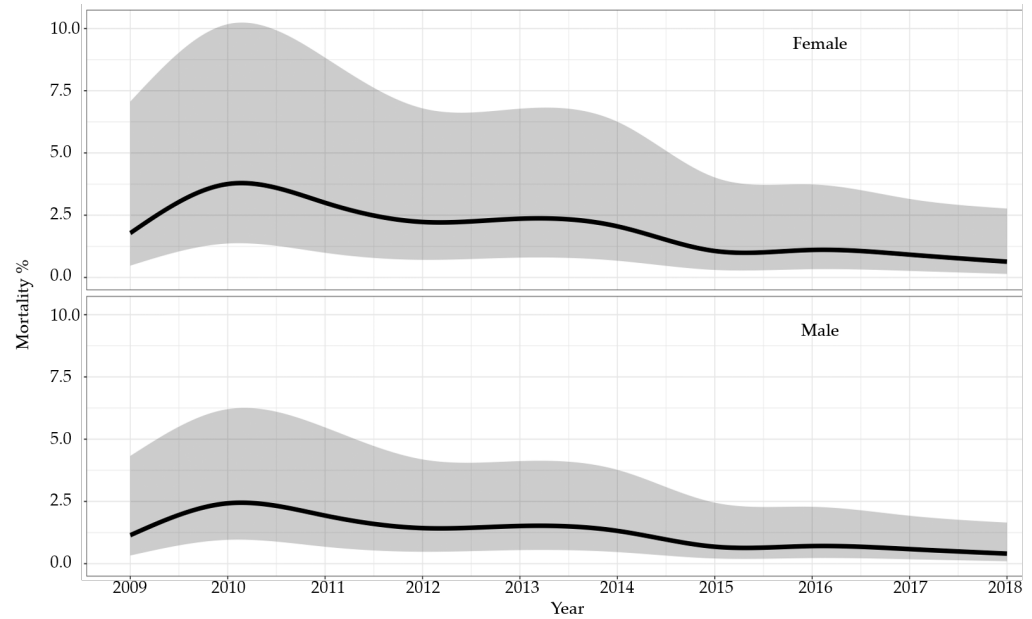


Figure 3. Hospital mortality for non-ruptured ascending and arch aortic aneurysms (nrAA). Smoothed and adjusted hospital mortality of male and female cases in Switzerland between 2009 and 2018. The shadowed area around the curves indicates the 95% confidence interval. Mortality rates were adjusted for age, year of treatment, and van Walraven score.

Variable		N	Odds ratio	OR with 95%-CI	p-value
Sex	Male	3035		Reference	
	Female	1091		1.53 (0.95, 2.43)	0.077
Age, years		4126		1.05 (1.02, 1.07)	<0.001
van Walraven Score		4126		1.08 (1.06, 1.11)	<0.001
Hospital Level	University Hospital	2277		Reference	
	Major Hospital	1256		0.50 (0.28, 0.87)	0.018
	Other	593		0.84 (0.41, 1.59)	0.618
Insurance Class	General	2913		Reference	
	Private	1213		1.35 (0.83, 2.16)	0.215
Aortic valve	No replacement	3496		Reference	
	Valve replacement	453		0.34 (0.10, 0.89)	0.049
	Composite graft	177		0.84 (0.19, 2.47)	0.775
Period	2009-2013	1992		Reference	
	2014-2018	2134		0.53 (0.32, 0.86)	0.012

Figure 4. Multivariable regression analysis on hospital mortality. The multivariable logistic regression model for nrTAA (n = 4126). One case was deleted due to missing data. Odds ratios are presented with corresponding 95% confidence intervals and p-values.

Of note, hospital mortality was lower in major non-university hospitals than in university hospitals and lower in the more recently treated cohort (2014–2018) than in the more historic cohort treated between 2009 and 2013.

3.3. Treatment Specifications and Outcomes in rAA

Table 4 summarizes the procedural details and treatment outcomes of all the cases that were surgically treated for rAA. Details of the cases that received palliative care for

rAA are summarized in Supplementary Table S2. Of note, there were similar tendencies as for the treatment of nrAA, with a higher proportion of no valve treatment, more red blood transfusions, and a longer ICU and hospital stay in females. However, the numbers were much smaller, and none of the differences were statistically significant.

Table 4. Treatment and outcome of ruptured ascending and arch aortic aneurysms (surgically treated) (rAA).

	Male (N = 74)	Female (N = 34)	Total (N = 108)	p-Value
Aortic valve management				0.485
No replacement	66 (89.2%)	32 (94.1%)	98 (90.7%)	
Valve replaced, mechanical	1 (1.4%)	0 (0.0%)	1 (0.9%)	
Valve replaced, biological	4 (5.4%)	0 (0.0%)	4 (3.7%)	
Composite graft, biological	2 (2.7%)	2 (5.9%)	4 (3.7%)	
Composite graft, mechanical	1 (1.4%)	0 (0.0%)	1 (0.9%)	
Hybrid procedure	1 (1.4%)	0 (0.0%)	1 (0.9%)	0.496
Length of stay ICU, hours	55 (20, 132)	58 (20, 142)	58 (20, 137)	0.924
Length of stay (swissdrg), days	11 (8, 17)	15 (8, 20)	12 (8, 19)	0.240
Transfusion Ec				0.444
0	33 (44.6%)	11 (32.4%)	44 (40.7%)	
1–5	21 (28.4%)	13 (38.2%)	34 (31.5%)	
>5	20 (27.0%)	10 (29.4%)	30 (27.8%)	
Transfusion FFP				0.223
0	64 (86.5%)	33 (97.1%)	97 (89.8%)	
1–5	7 (9.5%)	1 (2.9%)	8 (7.4%)	
>5	3 (4.1%)	0 (0.0%)	3 (2.8%)	
Transfusion Tc				0.667
0	67 (90.5%)	30 (88.2%)	97 (89.8%)	
1–5	6 (8.1%)	4 (11.8%)	10 (9.3%)	
>5	1 (1.4%)	0 (0.0%)	1 (0.9%)	
Complications				
Myocardial infarction	1 (1.4%)	1 (2.9%)	2 (1.9%)	0.569
Acute stroke	1 (1.4%)	1 (2.9%)	2 (1.9%)	0.569
Acute paraplegia	0	0	0	n.a.
Acute renal failure	1 (1.4%)	0 (0.0%)	1 (0.9%)	0.496
CVVHD	2 (2.7%)	2 (5.9%)	4 (3.7%)	0.416
Acute mesenteric ischemia	4 (5.4%)	2 (5.9%)	6 (5.6%)	0.920
Large bowel resection	2 (2.7%)	0 (0.0%)	2 (1.9%)	0.333
Small bowel resection	2 (2.7%)	0 (0.0%)	2 (1.9%)	0.333
Acute limb ischemia	5 (6.8%)	0 (0.0%)	5 (4.6%)	0.121
Crural fasciotomy	0	0	0	n.a.
Amputation	0	0	0	n.a.
Destination after discharge				0.205
Home	14 (18.9%)	3 (8.8%)	17 (15.7%)	
Rehabilitation	27 (36.5%)	19 (55.9%)	46 (42.6%)	
Acute care hospital	18 (24.3%)	5 (14.7%)	23 (21.3%)	
Deseased	15 (20.3%)	7 (20.6%)	22 (20.4%)	
Hospital Mortality	15 (20.3%)	7 (20.6%)	22 (20.4%)	0.970

Data were complete. Continuous variables were summarized as medians and quartiles (Q1, Q3). ICU, intensive care unit; CVVHD, continuous venovenous hemodialysis.

The in-hospital mortality for rTAA decreased by 20.3% in men and 20.6% in women. Owing to the small number of cases, no further statistical analysis was performed.

4. Discussion

To our knowledge, this is the first population-based nationwide study of aneurysms in the ascending aorta and the aortic arch. Of the 4388 treated cases in the period analyzed, 94.1% were nrAA and 5.9% were rAA. The hospital incidence of ascending aortic and aortic arch aneurysms was stable for both sexes over the past decade, with 7.8 (95%CI: 6.9 to 8.7) per 100,000 men and 2.9 (2.4–3.4) per 100,000 women for nrAA and 0.4 (95%CI: 0.2 to 0.6) per 100,000 men and 0.3 (0.2 to 0.5) per 100,000 women for rAA. This contrasts with previous studies that have focused on the entire thoracic aorta and showed an increasing incidence [7]. This increase was thought to be mainly due to an increase in CT scans, as these scans often incidentally discover asymptomatic aneurysms. This hypothesis is

supported by the significant increase in the number of chest CT scans performed over time [24]. This increased incidence in men is consistent with findings from the Swedish National Health Care Register, showing a higher rate of surgical intervention in men [3]. Nevertheless, the incidence of aortic dissection and aortic rupture remains stable during the same period, ranging from 1.6 to 5 per 100,000 persons/year [24–26].

There has been a more pronounced increase in TAA and dissection incidence among women than among men, possibly linked to increased awareness of severe female vascular diseases, which was also not reflected in our data for AA in Switzerland [27].

Sampson et al. reported an increasing global mortality rate for all aortic aneurysms from 1990 to 2010, from 2.49 to 2.78 per 100,000 persons/year. The Rochester Epidemiology Project database showed a 5-year survival rate of only 62.5% for thoracic aortic aneurysms, with age and smoking being associated with all-cause mortality [6].

The overall hospital mortality in surgically treated nrAAs was 2.0% and lower compared to countries such as the United States or the Netherlands [28,29]. Interestingly, the crude mortality was significantly higher in women than in men, which is in line with most analyses of aortic surgery [7,29–32]. However, a multivariable analysis adjusted for the observed age difference and other parameters showed that mortality did not differ significantly between the sexes. Of note, women were on average 5 years older at the time of surgery, and increasing age was significantly associated with hospital mortality, as previously shown [4,7,33]. The average hospital stay was significantly longer for women, and the rate of direct discharge to home was lower, presumably indicating higher morbidity in females.

The multivariable analysis further revealed that a higher morbidity score (van Walraven score) was associated with higher mortality. On the other hand, a more recent treatment (surgery in the second half of the study period), concomitant aortic valve replacement, and treatment in a major hospital (non-university) were associated with lower mortality. While age and comorbidities are known risk factors, the better outcome in major hospitals compared to university hospitals was surprising (OR 0.50; 95%CI: 0.28 to 0.87; $p = 0.018$). A clear association between treatment volume and outcome has been demonstrated in the field of aortic surgery [34]. In particular, for operations on the ascending aorta, aortic arch for aortic dissection type A, better results were demonstrated with higher individual and institutional case numbers [35,36]. As higher case numbers are assumed at university hospitals, our results contrast these findings. However, this administrative data does not allow adjustments for clinical parameters and thus obscures further analyses. One explanation could be that more training is carried out at university hospitals and there is a greater turnover of staff, which in turn leads to lower individual case numbers. In addition, it can be assumed that doctors in training have lower skill levels, which in turn leads to poorer results [37]. However, this is rather speculative.

The in-hospital mortality rate for operated ruptures in Switzerland was 20.4% and stable in the observed decade. There is only historic data available to put these findings into context. An analysis of the US Medicare population in 2011 showed that the all-cause hospital mortality rate after open surgical treatment for ruptures of thoracic aortic aneurysm was 45% [38]. The substantially better treatment results in Switzerland are likely associated with the high turn-down rate of almost 60%, which induces selection bias and hinders a direct comparison. More historic data from Ontario, Canada, showed an overall mortality rate of 80–100% for rAA between 1998 and 2016 but included patients without surgical treatment [39,40].

Open surgical repair is still considered the gold standard for the treatment of pathologies involving the ascending aorta and aortic arch [41,42]. However, a significant proportion of patients with these pathologies have relevant concomitant cardiopulmonary diseases that preclude these highly invasive procedures. The endovascular revolution began in the late 1980s and has become the gold standard for the treatment of descending aortic pathologies [43]. Likewise, the majority of patients with infrarenal aortic diseases are nowadays treated endovascularly in most Western countries. These successes have led to

an extension of the endovascular concept to the more complex thoracoabdominal aortic segment. The first branched thoracic stent graft was performed in 1996 on a patient with an aortic dissection [44]. However, it is only in the last 10–15 years that this technology has become established, standardized, and widespread.

The aortic root and the ascending aorta constitute unique anatomical and physiological characteristics. The rapid blood flow, the high wall tension, the proximity to the aortic valve and coronary ostia, as well as the four-dimensional pulsatile motion during cardiac and respiratory cycles, represent the ultimate challenges to endovascular therapy [45]. Despite these challenges, attempts to treat the ascending aorta endovascularly have been made since 2000 and have gained increasing attention as an alternative treatment strategy, especially for critically ill patients [41]. In recent years, there have been growing case series on the endovascular treatment of non-dissected diseases of the ascending aorta [42]. The currently available prostheses on the market require specific anatomical conditions. Moreover, most are not directly available off-the-shelf but are custom-made for individual patients, posing a challenge in emergency situations due to the time required for production. Nevertheless, viable solutions exist with the appropriate equipment. For instance, in emergency situations where cerebral perfusion is assured (e.g., with veno-arterial ECMO), *in situ* laser fenestration can be used to address pathologies in the aortic arch [46].

With endovascular aortic arch repair being established in selected patients, endovascular therapy has reached the ascending aorta and, with it, its last bastion. It is particularly interesting for patients with a high surgical risk and could offer these patients potentially life-saving therapy that would otherwise not be surgically treated [13,43]. While the introduction of endovascular therapy in the descending aorta and abdominal aorta has led to a significant reduction in conventional open surgery, this trend has not been demonstrated for the ascending aorta or the aortic arch [4,7]. Likewise, there was no decreasing incidence of open repair of ascending or arch pathologies in Switzerland. It seems like the endovascular therapy in Switzerland is currently complementing open repair and does not lead to a decrease in open repair.

Diseases of the proximal aorta are complex and associated with high procedural risks. This requires tailor-made treatment strategies that are established by a multidisciplinary team, including cardiac surgeons, vascular surgeons, interventional radiologists, cardiologists, and anesthesiologists.

There are several limitations to this analysis, mainly due to the use of administrative rather than clinical data. The inherent strengths and limitations of routinely collected administrative data have been well documented [44].

The major limitation of this study was the lack of a specific ICD code for aneurysms of the ascending aorta, aortic arch, and descending aorta. Instead, the current classification bins these entities into one code for unruptured cases and one code for ruptured cases. This makes it difficult to distinguish between aneurysms involving the ascending aorta and those involving the descending aorta. The combination of ICD and procedure coding allows the identification of open surgical cases of thoracic aortic aneurysms. However, there may be rare cases in which ECC is not coded. As this would have a major impact on reimbursement, this problem is likely to be small. Furthermore, some cases captured in this study may have been treated with ECC for an isolated descending aortic aneurysm. Robust data on the epidemiology of this rare pathology are lacking, but it is likely that most of these cases are treated with endovascular therapy; thus, the number of cases erroneously included in this study may be relatively small. Furthermore, estimating the proportion of palliative treatments for rTAA remains challenging because these cases cannot be distinguished from conservatively treated ruptures of descending thoracic aortic aneurysms.

There are other minor limitations that need to be discussed, such as the potential for bias due to coding errors that cannot be quantified and eliminated. However, for difficult outcomes, such as all-cause in-hospital mortality, the risk is likely to be low. Furthermore, the data do not allow independent observation of patients treated twice for the same ICD code, leading to double counting and potential bias in incidence rates. Although

the proportion of affected patients is unknown, it is likely negligible. Furthermore, the comparison of mortality rates with international data is limited because adjustments could only be made for age, sex, and the van Walraven comorbidity index, which does not fully capture the cardiovascular risk profile or functional capacity of treated individuals. Finally, the data do not differentiate between individuals with permanent residences in Switzerland and those with non-permanent residences (e.g., travelers and tourists). As a result, the actual incidence rates in Switzerland may differ slightly from those reported.

Despite these limitations, this analysis has a distinct advantage over registry data in terms of complete coverage of the population. It clearly showed robust epidemiologic trends because the assumptions and limitations remained the same throughout the reporting period.

5. Conclusions

This population-based national study of aneurysms of the ascending aorta and aortic arch showed that despite the international introduction of endovascular therapy, there was no reduction in the hospital incidence of patients treated with conventional surgery in Switzerland. At the same time, there was a significant reduction in in-hospital mortality in both men and women, with age and the von Walraven score being independent factors for worse outcomes.

Supplementary Materials: The following supporting information can be downloaded at: <https://www.mdpi.com/article/10.3390/healthcare12030388/s1>, Table S1. Utilized codes of procedures (CHOPS) and diagnoses (ICD-10); Table S2. Treatment and Outcome of palliatively treated Ruptured Ascending and Arch Aortic Aneurysms.

Author Contributions: Conceptualization: A.-L.M., A.Z., K.S., D.R., L.M. and B.R.; methodology: A.-L.M., A.Z., K.S., D.R., L.M. and B.R.; validation: A.-L.M., A.Z., L.M. and B.R.; formal analysis: L.M.; investigation: A.-L.M., B.R., L.M. and A.Z.; resources: A.Z.; data curation: L.M.; writing—review and editing: A.-L.M., A.Z., L.M. and B.R.; visualization, L.M.; supervision, A.Z., L.M. and B.R.; project administration: A.Z. All authors have read and agreed to the published version of the manuscript.

Funding: This study received no external funding.

Institutional Review Board Statement: The analysis of this anonymized dataset did not require ethical approval (waived by the local ethics board, BASEC-Nr. Req-2021-01010). This study was conducted in accordance with the STROBE guidelines.

Informed Consent Statement: Not applicable.

Data Availability Statement: The full dataset can be requested from the Federal Statistical Office of Switzerland, Espace de l'Europe 10, and CH-2010 Neuchâtel, Switzerland.

Acknowledgments: We thank Klaus Steigmiller for his contribution to the statistical analysis of the dataset.

Conflicts of Interest: The authors declare no conflicts of interest.

References

1. Abdulameer, H.; Al Taii, H.; Al-Kindi, S.G.; Milner, R. Epidemiology of Fatal Ruptured Aortic Aneurysms in the United States (1999–2016). *J. Vasc. Surg.* **2019**, *69*, 378–384.e2. [[CrossRef](#)] [[PubMed](#)]
2. Clouse, W.D.; Hallett, J.W.J.; Schaff, H.V.; Gayari, M.M.; Ilstrup, D.M.; Melton, L.J., 3rd. Improved Prognosis of Thoracic Aortic Aneurysms: A Population-Based Study. *JAMA* **1998**, *280*, 1926–1929. [[CrossRef](#)] [[PubMed](#)]
3. Olsson, C.; Thelin, S.; Ståhle, E.; Ekblom, A.; Granath, F. Thoracic Aortic Aneurysm and Dissection: Increasing Prevalence and Improved Outcomes Reported in a Nationwide Population-Based Study of More than 14,000 Cases from 1987 to 2002. *Circulation* **2006**, *114*, 2611–2618. [[CrossRef](#)] [[PubMed](#)]
4. Meuli, L.; Menges, A.-L.; Steigmiller, K.; Kuehnl, A.; Reutersberg, B.; Held, U.; Zimmermann, A. Hospital Incidence and Mortality of Patients Treated for Abdominal Aortic Aneurysms in Switzerland—A Secondary Analysis of Swiss DRG Statistics Data. *Swiss Med. Wkly.* **2022**, *152*, w30191. [[CrossRef](#)] [[PubMed](#)]
5. Tala, P.; Kyllönen, K.E.; Harjola, P.; Appelqvist, P. Aneurysms of the Thoracic and Abdominal Aorta. I. Incidence of Aortic Aneurysm in 10,392 Autopsies. *Ann. Chir. Gynaecol. Fenn.* **1967**, *56*, 270–277. [[PubMed](#)]

6. Huang, Y.; Schaff, H.V.; Dearani, J.A.; Oderich, G.S.; Bower, T.C.; Kalra, M.; Greason, K.L.; Pochettino, A.; Viehman, J.K.; Harmsen, W.S.; et al. A Population-Based Study of the Incidence and Natural History of Degenerative Thoracic Aortic Aneurysms. *Mayo Clin. Proc.* **2021**, *96*, 2628–2638. [CrossRef] [PubMed]
7. Geisbüsch, S.; Kuehn, A.; Salvermoser, M.; Reutersberg, B.; Trenner, M.; Eckstein, H.-H. Increasing Incidence of Thoracic Aortic Aneurysm Repair in Germany in the Endovascular Era: Secondary Data Analysis of the Nationwide German DRG Microdata. *Eur. J. Vasc. Endovasc. Surg.* **2019**, *57*, 499–509. [CrossRef]
8. ICD10 Data. Available online: <https://www.icd10data.com/ICD10CM/Codes> (accessed on 10 November 2023).
9. Bentall, H.; De Bono, A. A Technique for Complete Replacement of the Ascending Aorta. *Thorax* **1968**, *23*, 338–339. [CrossRef]
10. David, T.E.; Feindel, C.M. An Aortic Valve-Sparing Operation for Patients with Aortic Incompetence and Aneurysm of the Ascending Aorta. *J. Thorac. Cardiovasc. Surg.* **1992**, *103*, 617–621; discussion 622. [CrossRef]
11. David, T.E.; Feindel, C.M.; Webb, G.D.; Colman, J.M.; Armstrong, S.; Maganti, M. Aortic Valve Preservation in Patients with Aortic Root Aneurysm: Results of the Reimplantation Technique. *Ann. Thorac. Surg.* **2007**, *83*, S732–S735; discussion S785–S790. [CrossRef]
12. Dake, M.D.; Miller, D.C.; Semba, C.P.; Mitchell, R.S.; Walker, P.J.; Liddell, R.P. Transluminal Placement of Endovascular Stent-Grafts for the Treatment of Descending Thoracic Aortic Aneurysms. *N. Engl. J. Med.* **1994**, *331*, 1729–1734. [CrossRef] [PubMed]
13. Abisi, S.; Elnemr, M.; Clough, R.; Alotaibi, M.; Gkoutzios, P.; Modarai, B.; Haulon, S. The Development of Totally Percutaneous Aortic Arch Repair with Inner-Branch Endografts: Experience from 2 Centers. *J. Endovasc. Ther.* **2023**. online ahead of print. [CrossRef] [PubMed]
14. Garg, K.; Pergamo, M.; Jiang, J.; Smith, D. Endovascular Stenting of the Ascending Aorta for Visceral Malperfusion in a Patient with Type A Aortic Dissection. *J. Vasc. Surg. Cases Innov. Tech.* **2023**, *9*, 101341. [CrossRef] [PubMed]
15. Ghoreishi, M.; Chahal, D.; Shah, A.; Kang, J.; Hirsch, J.; Tran, D.; McCloskey, D.; Shkullaku, M.; Gupta, A.; Strauss, E.R.; et al. First-in-Human Endovascular Aortic Root Repair (Endo-Bentall) for Acute Type A Dissection. *Circ. Cardiovasc. Interv.* **2023**, *16*, e013348. [CrossRef] [PubMed]
16. Schweizerische Operationsklassifikation (CHOP). Systematisches Verzeichnis–Version 2022. Available online: <https://bit.ly/3zYViv6> (accessed on 10 November 2023).
17. STROBE. Strengthening the Reporting of Observational Studies in Epidemiology. Available online: <https://www.strobe-statement.org/> (accessed on 10 November 2023).
18. Federal Statistical Office. Permanent and Nonpermanent Resident Population by Institutional Units, Citizenship (Category), Sex and Age. 2020. Available online: https://www.pxweb.bfs.admin.ch/pxweb/de/px-x-0102010000_101/-/px-x-0102010000_101.px (accessed on 10 November 2023).
19. Gesundheitsberichterstattung des Bundes. 2020. Available online: https://www.gbe-bund.de/gbe/pkg_isgbe5.prc_menu_olap?p_uid=gast&p_aid=3767823&p_sprache=D&p_help=0&p_indnr=1000&p_indsp=&p_ityp=H&p_fid= (accessed on 10 November 2023).
20. Federal Statistical Office. Population Data. 2020. Available online: <https://www.bfs.admin.ch/bfs/en/home/statistics/population.assetdetail.14367975.html> (accessed on 10 November 2023).
21. Altman, D.G.; Machin, D.; Bryant, T.; Gardner, M. *Statistics with Confidence: Confidence Intervals and Statistical Guidelines*, 2nd ed.; John Wiley & Sons: Hoboken, NJ, USA, 2000.
22. van Walraven, C.; Austin, P.C.; Jennings, A.; Quan, H.; Forster, A.J. A Modification of the Elixhauser Comorbidity Measures into a Point System for Hospital Death Using Administrative Data. *Med. Care* **2009**, *47*, 626–633. [CrossRef] [PubMed]
23. R Core Team. R: A Language and Environment for Statistical Computing. *Vienna Austria R Foundation for Statistical Computing*. 2013. Available online: <https://www.r-project.org/>, (accessed on 16 May 2023).
24. Lodewyckx, C.L.; Prior, H.J.; Hiebert, B.M.; Nickel, N.C.; Yamashita, M.H.; Ouzounian, M.; Kumar, K.K.; Arora, R.C.; Tangri, N. A Province-Wide Analysis of the Epidemiology of Thoracic Aortic Disease: Incidence Is Increasing in a Sex-Specific Way. *Can. J. Cardiol.* **2020**, *36*, 1729–1738. [CrossRef] [PubMed]
25. McClure, R.S.; Brogly, S.B.; Lajkosz, K.; Payne, D.; Hall, S.F.; Johnson, A.P. Epidemiology and Management of Thoracic Aortic Dissections and Thoracic Aortic Aneurysms in Ontario, Canada: A Population-Based Study. *J. Thorac. Cardiovasc. Surg.* **2018**, *155*, 2254–2264.e4. [CrossRef]
26. Gouveia, E.; Melo, R.; Mourão, M.; Caldeira, D.; Alves, M.; Lopes, A.; Duarte, A.; Fernandes, E.; Fernandes, R.; Mendes Pedro, L. A Systematic Review and Meta-Analysis of the Incidence of Acute Aortic Dissections in Population-Based Studies. *J. Vasc. Surg.* **2022**, *75*, 709–720. [CrossRef]
27. Ailawadi, G.; Eliason, J.L.; Roelofs, K.J.; Sinha, I.; Hannawa, K.K.; Kaldjian, E.P.; Lu, G.; Henke, P.K.; Stanley, J.C.; Weiss, S.J.; et al. Gender Differences in Experimental Aortic Aneurysm Formation. *Arterioscler. Thromb. Vasc. Biol.* **2004**, *24*, 2116–2122. [CrossRef]
28. Beyer, S.E.; Secemsky, E.A.; Khabbaz, K.; Carroll, B.J. Elective Ascending Aortic Aneurysm Repair Outcomes in a Nationwide US Cohort. *Heart* **2023**, *109*, 1080–1087. [CrossRef]
29. Gökalp, A.L.; Thijssen, C.G.E.; Bekkers, J.A.; Roos-Hesselink, J.W.; Bogers, A.J.J.C.; Geuzebroek, G.S.C.; Houterman, S.; Takkenberg, J.J.M.; Mokhles, M.M. Male-Female Differences in Contemporary Elective Ascending Aortic Surgery: Insights from the Netherlands Heart Registration. *Ann. Cardiothorac. Surg.* **2023**, *12*, 577–587. [CrossRef] [PubMed]

30. Flink, B.J.; Long, C.A.; Duwayri, Y.; Brewster, L.P.; Veeraswamy, R.; Gallagher, K.; Arya, S. Women Undergoing Aortic Surgery Are at Higher Risk for Unplanned Readmissions Compared with Men Especially When Discharged Home. *J. Vasc. Surg.* **2016**, *63*, 1496–1504.e1. [[CrossRef](#)] [[PubMed](#)]
31. Pouncey, A.L.; David, M.; Morris, R.I.; Ulug, P.; Martin, G.; Bicknell, C.; Powell, J.T. Editor's Choice—Systematic Review and Meta-Analysis of Sex Specific Differences in Adverse Events after Open and Endovascular Intact Abdominal Aortic Aneurysm Repair: Consistently Worse Outcomes for Women. *Eur. J. Vasc. Endovasc. Surg.* **2021**, *62*, 367–378. [[CrossRef](#)]
32. De Freitas, S.; Falls, G.; Weis, T.; Bakhshi, K.; Korepta, L.M.; Bechara, C.F.; Erben, Y.; Arya, S.; Fatima, J. Comprehensive Framework of Factors Accounting for Worse Aortic Aneurysm Outcomes in Females: A Scoping Review. *Semin. Vasc. Surg.* **2023**, *36*, 508–516. [[CrossRef](#)] [[PubMed](#)]
33. Friedrich, C.; Freundt, M.; Salem, M.A.; Panholzer, B.; Huenges, K.; Puehler, T.; Cremer, J.; Haneya, A. Sex-Specific Outcome after Ascending Aortic Surgery in Moderate Hypothermic Circulatory Arrest. *Thorac. Cardiovasc. Surg.* **2021**, *69*, 314–321. [[CrossRef](#)] [[PubMed](#)]
34. Trenner, M.; Kuehnl, A.; Salvermoser, M.; Reutersberg, B.; Geisbuesch, S.; Schmid, V.; Eckstein, H.-H. Editor's Choice—High Annual Hospital Volume Is Associated with Decreased in Hospital Mortality and Complication Rates Following Treatment of Abdominal Aortic Aneurysms: Secondary Data Analysis of the Nationwide German DRG Statistics from 2005 to 2013. *Eur. J. Vasc. Endovasc. Surg.* **2018**, *55*, 185–194. [[CrossRef](#)] [[PubMed](#)]
35. Bashir, M.; Harky, A.; Fok, M.; Shaw, M.; Hickey, G.L.; Grant, S.W.; Uppal, R.; Oo, A. Acute Type A Aortic Dissection in the United Kingdom: Surgeon Volume—Outcome Relation. *J. Thorac. Cardiovasc. Surg.* **2017**, *154*, 398–406.e1. [[CrossRef](#)]
36. Lenos, A.; Bougioukakis, P.; Irimie, V.; Zacher, M.; Diegeler, A.; Urbanski, P.P. Impact of Surgical Experience on Outcome in Surgery of Acute Type A Aortic Dissection. *Eur. J. Cardio-Thorac. Surg.* **2015**, *48*, 491–496. [[CrossRef](#)]
37. Stulberg, J.J.; Huang, R.; Kreutzer, L.; Ban, K.; Champagne, B.J.; Steele, S.R.; Johnson, J.K.; Holl, J.L.; Greenberg, C.C.; Bilimoria, K.Y. Association Between Surgeon Technical Skills and Patient Outcomes. *JAMA Surg.* **2020**, *155*, 960–968. [[CrossRef](#)]
38. Goodney, P.P.; Travis, L.; Lucas, F.L.; Fillinger, M.F.; Goodman, D.C.; Cronenwett, J.L.; Stone, D.H. Survival after Open versus Endovascular Thoracic Aortic Aneurysm Repair in an Observational Study of the Medicare Population. *Circulation* **2011**, *124*, 2661–2669. [[CrossRef](#)]
39. Johansson, G.; Markström, U.; Swedenborg, J. Ruptured Thoracic Aortic Aneurysms: A Study of Incidence and Mortality Rates. *J. Vasc. Surg.* **1995**, *21*, 985–988. [[CrossRef](#)]
40. Yiu, R.S.; Cheng, S.W.K. Natural History and Risk Factors for Rupture of Thoracic Aortic Arch Aneurysms. *J. Vasc. Surg.* **2016**, *63*, 1189–1194. [[CrossRef](#)] [[PubMed](#)]
41. Dorros, G.; Dorros, A.M.; Planton, S.; O'Hair, D.; Zayed, M. Transseptal Guidewire Stabilization Facilitates Stent-Graft Deployment for Persistent Proximal Ascending Aortic Dissection. *J. Endovasc. Ther.* **2000**, *7*, 506–512. [[CrossRef](#)] [[PubMed](#)]
42. Wang, C.; Regar, E.; Lachat, M.; von Segesser, L.K.; Maisano, F.; Ferrari, E. Endovascular Treatment of Non-Dissected Ascending Aorta Disease: A Systematic Review. *Eur. J. Cardio-Thorac. Surg.* **2018**, *53*, 317–324. [[CrossRef](#)] [[PubMed](#)]
43. Dakour-Aridi, H.; Yin, K.; Hussain, F.; Locham, S.; Azizzadeh, A.; Malas, M.B. Outcomes of Intact Thoracic Endovascular Aortic Repair in Octogenarians. *J. Vasc. Surg.* **2021**, *74*, 882–892.e1. [[CrossRef](#)]
44. Trenner, M.; Eckstein, H.-H.; Kallmayer, M.; Reutersberg, B.; Kühnl, A. Secondary Analysis of Statutorily Collected Routine Data. *Gefäßchirurgie* **2019**, *24*, 220–227. [[CrossRef](#)]
45. Juraszek, A.; Czerny, M.; Rylski, B. Thoracic Endovascular Aortic Repair: Current Evidence and Challenges. *Kardiol. Pol.* **2022**, *80*, 540–547. [[CrossRef](#)] [[PubMed](#)]
46. Dean, A.; Wanhainen, A.; Mani, K.; Kuzniar, M.; Grima, M.; Zuccon, G.; Lindström, D. In Situ Laser Fenestrations of Aortic Endografts for Emergent Aortic Disease. *Ann. Vasc. Surg.* **2023**, *93*, 329–337. [[CrossRef](#)]

Disclaimer/Publisher's Note: The statements, opinions and data contained in all publications are solely those of the individual author(s) and contributor(s) and not of MDPI and/or the editor(s). MDPI and/or the editor(s) disclaim responsibility for any injury to people or property resulting from any ideas, methods, instructions or products referred to in the content.